



Newsletter

Volume 8 Issue 4

April 2011

SHARING CHRIST'S LOVE
WITH THE WORLD

**Sunday
Worship Services**
8:00 a.m. & 10:30 a.m.

Sunday School
9:30 a.m.

Inside this issue:

Pastors and Church Council	2/3
Worship Ministries	3/4
Discipleship Ministries	5/6
Serving Ministries	6-9
Supporting/Growing Ministries	9-11
Proclaiming Ministries	11
Parish Life Ministries	12
Worship Assistant	13
Church Calendar	14
Birthdays/ Anniversaries	15

Monday, Tuesday, and Wednesday in Holy Week focus on the events of the last week of Jesus' earthly life. Rather than trying to "walk where Jesus walked," the church uses these days to view Christ more particularly in our lives today. Jesus comes to us in our day through the reading of scripture, through preaching, through the water of baptism, through the bread and wine of communion, and through the prayers. Be open to the surprising ways in which Christ is made known to you this week. Also look for opportunities to share the gift of his life with others. This week concludes with the Three Days: Maundy Thursday, Good Friday, and the Vigil of Easter. A Festival Celebration of Easter will be held April 24th.



PALM SUNDAY, APRIL 17, 2011
Services at 8:00am & 10:30 am

HOLY MONDAY, APRIL 18, 2011
6:30pm: Service of Word & Prayer

HOLY TUESDAY, APRIL 19, 2011
6:30pm: Service of Word & Prayer

HOLY WEDNESDAY, APRIL 20, 2011
12 noon: Brief service of Healing and Laying on of Hands
6:30pm: Service of Healing and Laying on of Hands

MAUNDY THURSDAY, APRIL 21, 2011
6:30pm: Service of Holy Communion,
Foot Washing & Stripping of the Altar

GOOD FRIDAY, APRIL 22, 2011
3-5pm: Sanctuary will be available for meditative prayer & contemplation
7:00pm: Service of the Cross

HOLY SATURDAY, APRIL 23, 2011
8:00pm: Vigil of Easter Service
St. Andrew's Episcopal Church & St. Paul Lutheran

PASTOR AND CHURCH COUNCIL

Stewardship Spotlight:

“Think of us in this way, as servants of Christ and stewards of God’s mysteries” 1 Corinthians 4:1

The dictionary defines steward as “a person who manages another's property or financial affairs; one who administers anything as the agent of another or others.” Therefore, if we are considered, stewards of God’s mysteries, then we are to be caretakers of all that is God’s. This is a high calling and a joyful one at that. We are called as God’s stewards to manage his property (the earth), God’s financial affairs (our tithes to the church and world), and to serve as agents for those who have no one to speak on their behalf.

God’s mysteries are all around us and in us and through us. These mysteries are visibly seen in the incarnation of Christ and within the church, where Christ body is most relational. There are however, many of these mysteries that remain just that, a mystery. We are called through our baptism in Christ to be both servants and stewards. We are not called to lord or judge our neighbor.

Everything we have and all that we are comes from God. We are incarnational mysteries at work each day in the world. If we believe that all we have and all we are comes from God; then we need not worry of letting money hold us back from doing what God has called us to do. If we put money (lack thereof or the abundance of it) above God; then we have let money become our master. And all of us know “No one can serve two masters; for a slave will either hate the one and love the other, or be devoted to the one and despise the other. You cannot serve God and wealth” (Matthew 6:24).

Being stewards of God’s mysteries means believing and having faith that God is an active verb and not a dead noun. Being stewards of God’s mysteries means believing and having faith that God has not brought any of us this far to leave us stranded and drowning in the sea of worry and anxiety.

As a congregation, we have been abundantly blessed throughout our fifty-six year history of mission and ministry, by the many that have been and still are stewards of God’s mysteries. We cannot live simply rooted in our history; we have to branch out towards our future. Branching out requires cultivation of our resources and renewal of our soil (souls). This means we need to continually look forward to what God is calling us to be about for the next fifty-six years of mission and ministry in this place.

To do nothing, is to allow ourselves to become master and to put God into the role of steward. Those are tables that are never good to turn. We are called to do much and do it generously, faithfully, and spiritually; allowing God to continue doing what God always does—TRANSFORM!

Ask yourselves, are you being a good steward of the manifold mysteries of God in this church, in your life, and in the world? May we all commit to being more involved in the worship life of this congregation, to increase our financial stewardship, to continue our fervent prayers for St. Paul’s ministries, and work on letting the community know that all are welcome in this place!

In doing all of these things; we become the embodiment of the divine mysteries of God. God whispers to us in the end, “Well done, good and faithful servant!”

Your Fellow Steward!

Pastor Kevin Strickland

PASTOR AND CHURCH COUNCIL

Council President

For many months I have written in the newsletters about church finances, ministry needs, wants, the economic situation of the community, church, and individuals. These are all things we talk about weekly and worry about daily. But now is not the time! This is the time to celebrate the coming of Easter. During these forty days, may we all worry a little less, support one another a little more, be thankful and show our thankfulness a little more and listen to God's call and prayer for us a little more. Little things can and do make a big difference in our lives and in the lives of others. Make the most of this Easter season for yourself, for those around you, for the church, and for the one who was called to give his all - Jesus!

Happy Easter.

Tom Sims - President

sims51@charter.net

WORSHIP MINISTRIES

Scripture readings for the Sundays in April:

Sunday, April 3rd 1Samuel 16:1-13; Psalm 23;
Ephesians 5:8-14; John 9:1-41

Sunday, April 10th Ezekiel 37:1-14; Psalm 130;
Romans 8:6-11; John 11:1-45

Sunday, April 17th Isaiah 50:4-9a; Psalm 31:9-16;
Philippians 2:5-11; Matthew 26:14-27:66

Sunday, April 24th Acts 10:34-43; Psalm 118:1-2 14-24;
Colossians 3:1-4; Matthew 28:1-10

Lectionary readings can be found at:

<http://www.elca.org/Growing-In-Faith/Worship/Lectionary/Year-A.aspx>

Calling all musicians!



The Music Ministry would like to invite you to share your gifts this Easter.

The Festival Orchestra will help lead the hymns and special music, and is comprised of instrumentalists of intermediate and advanced skill.

Rehearsals will be Sunday, April 10th and 17th at noon, and Saturday, April 23rd after the Holy Saturday Children's Activities.

Please see Stephanie Luedtke with questions or to sign up.

Vocalists, if you can't commit to year-round choir rehearsals, consider joining the choir for the Easter season. The choir rehearses on Wednesday evenings after the 6:30 Lenten services. See Marsha Wynn with questions.

Kids, are you looking for something fun to do this summer? Come to camp at St. Paul!

June 6-10 is Chamber Music Camp for students finishing grades 7-12, and June 13-17 is Music Bible Camp for those finishing grades 2-6. Each day will be from 9am to 3pm, and



will include devotions, artistic and recreational activities, field trips and special guests, and music rehearsals. Chamber Music Camp provides the opportunity to play or sing in trios, quartets, and other small groups, and Music Bible Camp prepares a fun and easy musical for performance at the end of the week. Email stephanieluedtke@yahoo.com with any questions or to request a registration form.

The Crucifer

The term "crucifer" comes from the Latin crux (cross) and ferre (to bear, carry.)

It thus literally means "cross-bearer."

The assistant who carries the processional cross is the Crucifer. To carry the cross is to give a sign to all the worshipers that Christ is about to enter their company in a very special way. In the procession the cross goes first as a sign that all Christians follow wherever the cross of Christ leads them.

WORSHIP MINISTRIES



**Lenten Worship continues
through Wednesday, April 13th**

**Sunday Worship
8:00am & 10:30am**

**Wednesday Worship
Noon & 6:30pm**

The 12 noon Mid-Week Lenten service offers an opportunity to gather as the people of God for a short prayer service and hear the Hebrew Scriptures come alive in our midst.

The 6:30pm service offers time for reflection and will be using the Holden Evening Prayer for our evening liturgy.

The Maryville College Board of Directors
is pleased to invite you to

*“With Heart and Hands and Voices”
A Community Celebration of Worship*

as part of the Inaugural Events for
Dr. William T. Bogart

11th President of Maryville College

Thursday, April 14, 2011

5:30pm – 6:30pm

New Providence Presbyterian Church

703 West Broadway Ave | Maryville, TN 37801

Please contact the Church Relations Office at 865.981.8217
if you need additional information.

**Maundy Thursday
Service
April 21st
6:30pm**

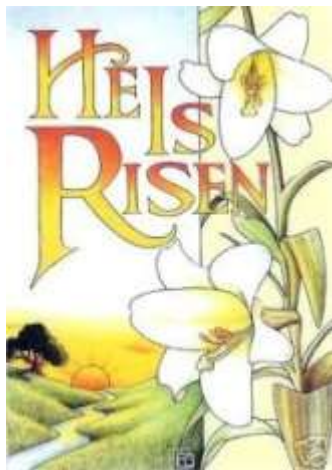
Maundy Thursday is the beginning of the Three Days—the ancient observance of the mystery of our salvation, which plunges the faithful into the death of Jesus and brings them with him to resurrection life. The Three Days begin with one liturgy extending from Thursday evening through the Easter Vigil.

**Good Friday Service
April 22nd
7:00pm**

This day is the second portion of the liturgy of the Three Days, which extends from Maundy Thursday through the Easter Vigil. As the church gathers to remember the death of Jesus, we focus not only upon the agony of the cross but especially upon God's victory through the crucified. Even more, we "lift high the cross" as the sign of God's triumph over sin, death, and evil.

**Vigil of Easter Service
with St. Andrew's
Episcopal Church
April 23rd
8:00pm**

*This is the night!
This is our Passover with Christ from darkness to light, from captivity to freedom, from death to life. Tonight is the heart of our celebration of the Three Days and the pinnacle of the church's year.*



**Easter Festival of the Resurrection Services
April 24th
8:00am and 10:30am**

Join us for this special day of worship as we celebrate
Christ's victory over the grave.

**Alleluia ~ Alleluia ~ Alleluia
He is Risen!**

DISCIPLESHIP MINISTRIES

Sunday School April Calendar of Events:

April 12, VBS Planning 6:00pm – 7:30pm

April 17, Confirmation class 5:00pm to 7:00pm ~ Supper and 3rd Article of the Apostle's Creed

April 24, Easter Sunday – Children decorate cross with flowers – No Classes

Flowers for the Easter Cross needed: Please bring your flowers to church on Easter morning – containers will be provided to keep them moist.

Adult Bible Study News:

Lectionary Bible Study, *“Daily Discipleship – Christ invites you to follow him . . . daily”*

This class meets in the Cry Room at 9:30. This Bible study is designed for small groups and does not require preparation by the participants. Grab a cup of coffee and join us as we study God's Word.

Vacation Bible School: Planning Meeting 6:00 pm Tuesday, April 12.

Vacation Bible School will be held June 26 to June 30. Volunteering for VBS is a great way to get acquainted with other members of our congregation. Come and join the fun and fellowship.



On Easter Sunday, all children preschool through Grade 6, are invited to bring flowers to help decorate the cross located near the entrance to our driveway. Sunday School teachers will help coordinate this activity.

This activity will take place between worship services – time will be announced.

Presently the cross is covered with a purple cloth, which represents Christ's suffering and our need for repentance. On Maundy Thursday this will be replaced with a black cloth to represent Christ's death on the cross. On Easter Sunday we celebrate the resurrection of our Lord and show this by placing flowers on the cross.

Holy Saturday Children's Easter Activities April 23, 2011 10:00am - Noon

All ages welcome

Children under 6 should be accompanied by an adult

St. Paul Youth will help lead a variety of activities for the younger children of the congregation, one of which will be an Easter Egg Hunt. Donuts and juice will be served.

Make sure to bring your basket for the egg hunt.



DISCIPLESHIP MINISTRIES

April Confirmation Schedule

- 6th: 6:30pm Mid-Week Lenten Service
 13th: 6:30pm Mid-Week Lenten Service
 17th: **5-7pm Dinner & Class: 3rd Article**
 18th: 6:30pm Holy Monday Prayer Service
 19th: 6:30pm Holy Tuesday Service of Word and Prayer
 20th: 12noon and 6:30pm Holy Wednesday Service of Healing
 21st: 6:30pm Maundy Thursday Service
 22nd: 7:00pm Good Friday Service
 23rd: **10:00am-12noon Holy Saturday Children's Easter Activities (Youth Led)**
 12-1pm Pizza Lunch
 1-2pm Festival Orchestra Practice
 8:00pm Combined Vigil of Easter Service with St. Andrew's Episcopal Church @St. Paul
 24th: 8:00am & 10:30am Easter Festival of the Resurrection Services
 27th: NO Wednesday Meal or Activities



Banks are still available

**Continue to fill your
Barnyard Bank
through Lent**

Banks will be collected during the
8:00am & 10:30am Easter morning
Worship Services

Chicks - \$10.00

10 little chicks make a big difference!

Within a few months of birth, chicks begin laying eggs. Eggs make nutritious meals for growing kids, and the extra eggs generate income to grow a small business.



SERVING MINISTRIES

Health & Wellness Corner

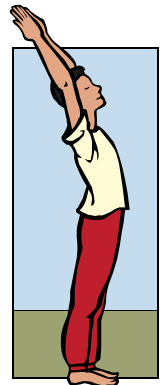
from Weill Cornell Medical College

Yoga is more than just stretching--research is now proving that even while sitting down you can lower your risk of heart disease and diabetes. And amazingly yoga can help fight everything from back pain to asthma, and even help you lose weight!

Yoga Continuing Through April 14th

There has been a small but faithful yoga group at church for the past 6 weeks on Tuesdays and Thursdays from 5:30 and 6:30 pm. We are recommitting for a 5-week session that will run from

March 15 through April 14. After that we will take a break for Holy Week and then make another decision about future sessions based on input from participants. Work and other commitments sometimes results in the absence or late arrival of leaders (*this term is used loosely, as leaders are the participants who turn the DVD on and get us started!*) but the group will continue and any participant is welcome to get the session started. We are keeping the TV/DVD in the choir room and using that carpeted space. If we have more than five people we move out into the narthex area. (We realize this is a traffic area and that people sometime need to move through us to get to the sanctuary and sound room.) Anyone is welcome to join this group. Questions? Contact Jacqueline Conzemius or Laura Mallette



SERVING MINISTRIES

PRAYER MINISTERS

The Lenten season is an excellent time to re-new and re-discipline our prayer life. St. Paul's has a dedicated and active prayer group that meets weekly. Led by Lorraine Geary, as many as a dozen participating individuals meet every Wednesday at 10:00am to pray for the concerns and needs of our congregation, its members and others. Additionally, there is a prayer chain for immediate or emergency prayer needs. All are welcome to be a part of either or both of these ministries within this serving ministry team. Lorraine Geary and Margaret Richardson serve as contacts.



**Family Promise
Host Week
April 17-24**

Looking for a different Lenten discipline this year? Volunteering with the Family Promise ministry offers a perfect opportunity to give the gift of your time in a way that makes a real difference in the lives of others. St. Paul will be hosting Family Promise during Holy Week. Come to church to worship and stay to serve. Signup is on-going in the Welcome Center. Contact Karin Bell (924-9016) for more information.

PARISH NURSE PROGRAM

In April Sandi Weber, leader of the Parish Nurse Program, will be starting **monthly blood**

pressure checks every 2nd Sunday following the 8 AM service. Volunteers are needed to conduct monthly checks following the 10:30



AM service. If you are skilled in nursing and willing to assist, please call Sandi at 981-7027. Additionally, Sandi is in need of volunteers to join her in the work of this program within our congregation. Thank you for sharing your skills to help others.

VOLUNTEER OF THE MONTH

Ethel Hartley first attended St. Paul's on Sunday, December 20, 1956 at the "old" church building on Court Street. She joined St. Paul's on June 9, 1957.



Since becoming a member, Ethel has served our church and others through various forms of ministry. She has been a nursery attendant, Sunday school teacher and choir member. As an accomplished seamstress, she has helped make robes for the children's choir, the banners and "reserved seating" pew covers, and is currently active making quilts with the Comfort Quilts Ministry. Ethel helped make the first Chrismons for the new building on Old Niles Ferry Road and is again helping make new ones this year. She has served as a volunteer with Community Food Connection.

Additionally, Ethel has served as president and treasurer of LCW/WELCA, chairman of the fellowship committee, financial secretary, chairman of Stewardship and Finance and a three year term on Church Council.

Ethel's love for St. Paul's is demonstrated through her role as a serving minister and volunteer. Thanks for continuing to inspire us, Ethel!

SERVING MINISTRIES



Bridge Refugee Services, Inc.

7035 Middlebrook Pike, suite A
Knoxville, Tennessee 37909

Refugee Co-sponsorship: A Summary

Each year, the U.S. resettles thousands of refugees nationwide. These refugees are legal residents of the U.S., and they were victims of religious, political, or ethnic persecution in their countries of origin. Founded in Knoxville in 1982, Bridge works with the federal government, the state of Tennessee, Church World Service, and Episcopal Migration Ministries to resettle refugees in East Tennessee. Bridge offers a wide range of services to refugees, but communities can also make an important contribution. Community

groups—such as churches, synagogues, mosques, and non-religious groups—can co-sponsor a refugee family. As co-sponsor, the group will work with Bridge to welcome refugees and help them integrate socially.

What is co-sponsorship?

Co-sponsorship is a temporary commitment to provide a refugee family with caring support. This commitment is carried out by a group of 8-20 dedicated individuals over a 3-6 month period. Before the refugee family arrives, co-sponsors work closely with Bridge to plan for their co-sponsorship experience. As the refugee family's friend and guide, **co-sponsors might commit to any or all of the following:**

- Meet before the refugee family arrives to learn about their culture and history, and delegate responsibilities among members of the co-sponsorship group
- Furnish the family's home or apartment
- Greet the family at the airport when they first arrive, transport them to their new home, and provide them with a culturally-appropriate meal
- Help family members find jobs and enroll children in school
- Familiarize the family with public transportation, grocery stores, banks, and other services
- Transport the family to appointments (to medical visits, for example)
- Tutor adults in English or enroll them in an English-learning class

What financial commitments do co-sponsors make?

This depends on what the co-sponsorship group can afford to do. Bridge suggests \$500 - \$2,000. Until the refugee family is economically self-sufficient (which often takes 3-6 months), co-sponsors usually pay at least part of the cost of rent, utilities, and groceries on behalf of the family. Co-sponsors, however, are not the only source of financial support for refugee families. Each family has a stipend (from Bridge's government and denominational partners), but that fund is often exhausted within 3 months after the family arrives.

How does Bridge support co-sponsors?

Bridge's Sponsorship Developer helps co-sponsors organize before the family's arrival. **Once the family arrives, the co-sponsorship group works closely with one of Bridge's Case Managers, who oversees services for the family.**

If you are interested in co-sponsoring a refugee family through Bridge, please contact Woods Nash, our Co-Sponsorship Developer, at (865) 607-0079 or woodsash@hotmail.com, and he will help you get started. All of us at Bridge appreciate your concern for refugees!

Please Donate Household Items to Furnish a Refugee's Home

Each year, the U.S. resettles thousands of refugees nationwide. These refugees are legal residents of the U.S., and they were victims of religious, political, or ethnic persecution in their countries of origin. Founded in 1982, Bridge helps refugees find a fresh start in East Tennessee by providing numerous social services, include safe, secure, and furnished housing.

Bridge consistently needs the following items to furnish refugees' apartments. Could you donate any of these items? If so, please call us at (865) 540-1311, ext. 13.

Kitchen Items

pots and pans, dishes, glasses and cups, cooking utensils, flatware, sharp knives, tea pots, mixing bowls, towels, brooms and dust pans, trash cans, cleaning supplies, and spices

Bathroom Items

shower curtains, bathmats, toothbrushes and toothpaste, soap, shampoo, toilet paper, towels, washcloths, feminine hygiene products, over-the-counter medicines, and brushes

Continued on the next page

SERVING MINISTRIES

Living Room Items

couches, chairs, coffee tables, side/end tables, lamps, TVs and TV tables, rugs, curtains

Bedroom Items

single and double bed mattresses (with frames and box springs, if possible), pillows, sheets, blankets, dressers, mirrors, bunk beds, hangers, and bedside tables

Childcare Items

car seats for infants, car booster seats, high chairs, cribs, strollers, and play structures

Miscellaneous Items

dictionaries (Arabic-English and Burmese-English), microwaves, bicycles, washers and dryers, alarm clocks, radios, desks, smoke detectors, tools, DVD/CD players, toys, first aid kits, pens and pencils, notepads, backpacks, coloring books and crayons, sports equipment, toasters, blenders, and vacuum cleaners

*Bridge is a 501(c)(3) non-profit organization, so all donations are tax-deductible. Thank you.

SUPPORTING/GROWING MINISTRIES

Member Spotlight for April is on Supporting/Growing Ministries at St. Paul



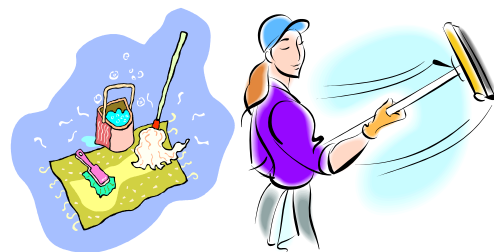
Bob and Delores Block

We would like to thank Delores for all of her past support on the Property Group and her continuing care for the plants in the Welcome Center. Bob, we thank you for your continued service on the church council and for all you do through Men in Mission.

CHURCH CLEAN-UP DAY

Saturday, April 9th ~ 8:00am to Noon

The Property Ministry Team needs many volunteers to help spruce up our building and grounds for Holy week. Things we would like to accomplish include window washing, polishing the Welcome Center and hall floors, making sure the Sanctuary is in prime condition, and that that limbs and trash on the grounds outside are picked up. If you know of other areas that you think need special attention please let Perry McClellan or Will Ludwig know. We will have refreshments available for all who come to help.



REMINDER FROM YOUR FINANCIAL SECRETARY

If you want to sign up to send your stewardship gifts through Saint Paul's account at Mountain National Bank (MNB) using your bank's on-line system, here are the steps to do so:

1. Call me or e-mail me for St. Paul's MNB account number.
2. Go into your bank's on-line bill pay system and click on "Add Payee".
3. Enter the following information where appropriate: St Paul Lutheran Church c/o MNB, ATTN April Harvey, 1820 W. Broadway, Maryville TN 37801, tel # 865-984-9991, St. Paul's account number, and enter your envelope number on the memo line if possible.

In the last 2 months, five additional families have signed up making the total 17 who are contributing to Saint Paul in this way.

You can call me at 865-405-9474, or e-mail me on hpcp2@tds.net,

Herb Perry

SUPPORTING/GROWING MINISTRIES



Mercury and the proper role of government: how much regulation is too much?

**By Mary Minette
ELCA Director for Environmental
Education and Advocacy**

“And there is, indeed, the greatest need to pray for temporal authority and government, as that by which most of all God preserves to us our daily bread and all the comforts of this life. For though we have received of God all good things in abundance, we are not able to retain any of them or use them in security and happiness, if He did not give us a permanent and peaceful government. For where there are dissension, strife, and war, there the daily bread is already taken away, or at least checked.” - Martin Luther, The Large Catechism (The Lord’s Prayer)

The proper role of government, and particularly government regulations, is a hot topic in our country at the moment. Some believe too many regulations slow economic growth and prevent companies from creating new jobs. Others believe our government plays a critical role in ensuring our economy functions fairly, and protecting our families and our communities.

But what if a regulation costs a business some money and time, but curtails emissions of a really harmful substance?

When I was about ten years old, my mom broke a mercury thermometer. After warning me that mercury was poisonous and not to touch it, she scooped it onto a piece of paper. Then she let me see the silvery, and strangely solid liquid, before she threw it and the broken glass in the trash.

Please take note—this is NOT the way to dispose of a broken mercury thermometer, should you happen to have one and break it.

Today, we know a lot more about the dangers of mercury than my mom did all those years ago. Mercury is a dangerous neurotoxin, even in tiny amounts. Its impact on a developing brain is so substantial that young children and women of childbearing age should avoid exposure to it, such as from eating fish.

Many states have issued mercury warnings about some types of fish caught in their lakes, rivers and streams. Large ocean fish such as swordfish and king mackerel contain enough mercury that the Environmental Protection Agency warns that women who are pregnant or may become pregnant and young children should not eat them at all.

So how did the mercury get into so many of our lakes, rivers and fish?

The majority of U.S. mercury emissions—about 50 percent—come from burning coal for electricity. Mercury is present in coal, is emitted into the air when coal is burned, attaches itself to rain as it falls to earth, ends up in our water and then in fish.

Another source of mercury and other toxic air emissions is large industrial boilers and solid waste incinerators.

This past week, the U.S. Environmental Protection Agency issued a new set of regulations for mercury emissions from these sources. Critics of the move claim that this is one more burdensome regulation that will hurt businesses and our slowly-recovering economy. But according to the EPA, they have worked to tailor the rule narrowly, to regulate only the largest sources of toxic air pollutants to get the greatest possible benefit while impacting fewer facilities.

This new rule will prevent approximately 1.4 tons of mercury from reaching our air, and the new controls will have the added benefit of reducing other types of air pollutants as well, helping to protect people who suffer from asthma and other respiratory problems.

Something to think about

When it comes to a substance as toxic as mercury, how much regulation is too much? How much is too little? How would you decide?

SUPPORTING/GROWING MINISTRIES

April 2011

We initiated the Lenten season by participating in the Ash Wednesday service with Our Saviour Lutheran Church in Johnson City. It was meaningful to have our two communities of faith come together during such a meaningful time when ashes were imposed and we share in the body and blood of Christ. I was honored to provide the message and assist with the imposition of ashes and at Holy Communion. One of our worshipers read one of the lessons.



Nancy Christensen, Director of Missions for the Southeastern Synod, facilitated our Vision Retreat. The most impressive experience was the enthusiasm of those present from our community of faith. Piggy-backing off that which we are already doing or have planned, we identified three specific objectives:

Schedule a fund-raising event that focuses on HIV/AIDS awareness, including testimonies and informative presentations. Make 1,000 initial calls in six months, beginning in April, led by lay people. It will be a monthly effort accompanied by a covered dish dinner and fellowship. People who are not making the calls will be in prayer. During the fellowship time, stories of the call experience will be shared.

Provide public opportunities for appropriate health screenings and information distribution at the Jonesborough Farmers Market and Jonesborough Flea Market.

In addition, we will continue other efforts such as participating in the Jonesborough Days Parade and providing food to the local food pantry.

One of our worshipers was hospitalized. Although she lives alone, the community of faith organized a support system of care-giving without the influence of the pastor. Hospital employees noticed and commented on the outpouring of love among the community.

On Sunday, March 6, there were thirty-one worshipers, although several active worshipers were absent. In addition, five children were present. I provided my first children's time at Cross of Grace.

May you continue your Lenten journey to the foot of the cross,

Ed Wolff, Mission Pastor

1103 Miller Drive

Jonesborough, TN 37659

PROCLAIMING MINISTRIES

Interested in being a member of St. Paul?

- Have you searched for a place to call home?
- Have you looked for a community to share your gifts and grow in faith?
- Have you yearned for a large extended family that will support you, uplift you, walk with you, and help you grow as a disciple of Jesus Christ?

Then we welcome you home to St. Paul Lutheran Church. We welcome you to come home and worship with us, dine with us, fellowship with us, grow in Christian love toward one another with us.



Come and learn more about St. Paul and what it means to be a member of this family of faith over a conversation with Pastor Kevin on **Sunday's April 10th and 17th from 9:15-10:15am in the Library.** If you decide to join, we will welcome you on Sunday, April 24th Easter Sunday.

If you have any questions, please contact Pastor Kevin at anytime 865-982-4285

PARISH LIFE MINISTRIES



Wednesday Night ~ 5:30pm

With your help, we will again be offering our traditional Lenten Soup Suppers this year, along with a new twist. Since Lent and Easter are late this year, we are going to try switch from soup and sandwiches on the Wednesdays in March to salads and sandwiches for the Wednesdays in April. Please utilize the sign up sheets on the Parish Life bulletin board. This will help us to ensure that we have enough food to feed everyone.

ALPHABET GROUP	April 6	April 13
A – G	Salad	Sandwiches
H – M	Sandwiches	Off Week
N - Z	Off Week	Salad
Clean up	Yams	Fellowship

Easter Breakfast

9:00am - 10:00am

Easter Morning



Join your St. Paul Family
for breakfast in
Richardson Hall

Women of the ELCA

Several important events are coming soon for ladies of St. Paul.

Join us for the Chrismon workshops to make new Chrismons and repair the old ones. No special skills are needed. We are currently adding sequins, beads and glitter to precut shapes. You can also learn how to cross stitch Chrismons. The next workshop will be at **10 a.m. on April 16**. If you are willing to provide nursery care or would come to the workshop if nursery care was available, call Elaine Fisher at 865-984-8731 to indicate your interest.

If you would like to make a unique Chrismon, kits are available online to make beautiful Chrismons. For example, check out www.chrismons.com for kits. Even if you can't come to the workshops, you can contribute something beautiful.

Set aside May 14, 11 a.m. for a special *Springtime in the Mountains* event. More details later! You won't want to miss it.

WELCA is recycling...

cell phones, eye glasses, printer cartridges, cancelled stamps, paperback novels for the women's prison, empty Elmer's Glue bottles, and a variety of labels and UPC bar codes. A list of the labels collected is above the bins. The recycling bins are down the hall from our member folders. This is good for the environment and helps a variety of charities.



SPAM East TN Lutheran church Tour Thursday, April 14th ~ 9:00am

Clayton Narveson and Ethel Duff have explored E. Tennessee for the oldest Lutheran churches. SPAM will take a tour to see what they discovered.

Bring a sack lunch and a drink, we will carpool from church and should return by 4:30. Come Join us and learn about other Lutheran groups in our region. and the fellowship we have together.

Plan ahead :

- May- Tour of Civil War sites in E. Tn.
- June- Oakridge
- July- Swim Party
- Aug.- Tour of Bush Bean Plant

ST PAUL LUTHERAN CHURCH WORSHIP SCHEDULE

Note: If you are unable to serve when scheduled, please find a replacement for that Sunday.

Duties	April 3	April 10	April 17 PALM SUNDAY	April 24 EASTER
	8 a.m.	8 a.m.	8 a.m.	8 a.m.
Assistant Minister	Beth Drane	Elaine Fisher	Harry Kokotos	Carolyn Speck
Assistant Minister	Beth Drane	Elaine Fisher	Harry Kokotos	Carolyn Speck
Communion Assistants	Suzanne Bielenberg	Jackie Kreider	Betty Ludwig	Floyd Johnson Joel Searfoss Mariane Searfoss
Lector		Betty Ludwig	Warren Bielenberg	Valarie Burts
Ushers	Mo Brueckner Floyd Johnson	Karl Weber Greg Wyatt	Tom Sims Al Hutchison Roy Johnson	Perry McClellan Herb Perry David Walker
Altar Guild	Suzanne Bielenberg	Ethel Duff	Joline Tollifson	Bertha Franks
Acolyte	Jillian Bruch	Taylor LeBlanc	Destiny Lindquist	Dana Conzenius
Crucifer	Jillian Bruch	Taylor LeBlanc	Sammy Fowler	Dana Conzenius
Children's Church				
Nursery				
Greeters	Leigh and Greg Caldwell	Bruce and Alice Andrews	Perry and Brenda McClellan	Warren and Suzanne Bielenberg
Sound Room	Will Ludwig	Steve Zrioka	David Walker	Will Ludwig
Tellers				
Torch Bearers				

Saint Paul Lutheran Church Weekly Calendar April

<p>Week 1 <u>Friday, April 1</u> MIM Retreat</p> <p><u>Saturday, April 2</u> MIM Retreat 4:30pm Blount County 4h - Chili Supper Auction</p> <p><u>Sunday, April 3</u> MIM Retreat</p> <p>8:00am Worship Service 9:30am Sunday School 10:30am Worship Service</p> <p><u>Monday, April 4</u></p> <p><u>Tuesday, April 5</u> 10:00am Comm Food Comm 11:30am Out To Lunch Bunch 6:30pm GS Troop # 552</p> <p><u>Wednesday, April 6</u> 10:00am Prayer Group 12Noon Mid-Week Lenten Service 5:30pmLenten Soup Supper 6:30pm Mid-Week Lenten Service 7:00pm Adult Choir Practice</p> <p><u>Thursday, April 7</u> 8:30am Lutheran Loungers 7:00pm Men in Mission</p> <p><u>Friday, April 8</u> Pastor Kevin's Day off</p> <p><u>Saturday, April 9</u> Church Clean up</p>		<p>Week 2 <u>Sunday, April 10</u> 8:00am Worship Service 9:30am Sunday School 10:30am Worship Service 12:00pm Festival Orchestra Practice</p> <p><u>Monday, April 11</u> 6:00pm Ministry Team Meeting 7:30pm Council</p> <p><u>Tuesday, April 12</u> 5:00pm Property 6:00pm GS Troop #74 6:30pm GS Troop # 552 7:00pm Girl Scout Troop 20325</p> <p><u>Wednesday, April 13</u> 10:00am Prayer Group 12Noon Mid-Week Lenten Service 5:30pmLenten Soup Supper 6:30pm Mid-Week Lenten Service 7:00pm Adult Choir Practice</p> <p><u>Thursday, April 14</u> 6:00pmThrivent BCC</p> <p><u>Friday, April 15</u> Newsletter Deadline Pastor Kevin's Day off</p> <p><u>Saturday, April 16</u></p>	<p>Week 3 <u>Sunday, April 17</u> Family Promise 8:00am Worship Service 9:30am Sunday School 10:30am Worship Service 12:00pm Festival Orchestra Practice</p> <p><u>Monday, April 18</u> Family Promise 6:30pm Holy Week Service</p> <p><u>Tuesday, April 19</u> Family Promise 9:00am SPAM 6:30pm Holy Week Service</p> <p><u>Wednesday, April 20</u> Family Promise 10:00am Prayer Group 12:00Noon Healing Service 6:30pm Healing Service 7:00pm Adult Choir Practice</p> <p><u>Thursday, April 21</u> Family Promise 10:00am WELCA Morning Group 6:30pm Maundy Thursday Service</p> <p><u>Friday, April 22</u> Family Promise 7:00pm Good Friday Service</p> <p><u>Saturday, April 23</u> Family Promise 10:00am Easter Activities 1:00pm Festival Orchestra Practice 1:00pm Out to Lunch Bunch 8:00pm Easter Vigil</p>	<p>Week 4 <u>Sunday, April 24</u> Family Promise 8:00am Worship Service 9:00am Easter Breakfast 9:45am Decorate the Cross 10:30am Worship Service</p> <p><u>Monday, April 25</u></p> <p><u>Tuesday, April 26</u> 6:30pm GS Troop # 552 7:00pm GS Troop 20325</p> <p><u>Wednesday, April 27</u> 10:00am Prayer Group 7:00pm Adult Choir Practice</p> <p><u>Thursday, April 28</u> 11:30am Out to Lunch Bunch 6:30pm NAMI Support Grp</p> <p><u>Friday, April 29</u> Pastor Kevin's Day off</p> <p><u>Saturday, April 30</u></p>
--	--	---	---	--



APRIL 2011

BIRTHDAYS & anniversaries

BIRTHDAYS

April 1	Jody Butler	April 13	Derrick Keeble
April 2	Jalilia Foster	April 15	Scott Lindquist
April 2	Liz Glandon	April 15	Kristoffer Jakobsen
April 3	Mary Frank	April 16	Scott Bruch
April 3	Destiny Lindquist	April 16	Madeline Witt
April 4	Sally Ihlenfeld	April 17	Erika Witt
April 4	Dorine Keeble	April 18	Kajler McMillion
April 4	Jillian Bruch	April 21	Mo Brueckner
April 4	Jo Tollefson	April 25	Bill Wylie
April 5	Jackie Wear	April 25	Karin Bell
April 5	Sylvia Johnson	April 27	Gary Kinney
April 6	René Zimmer	April 27	Greg Wyatt
April 7	Tami Wyatt	April 27	Sarah Geyer
April 8	Gail Vollman	April 29	Chris Sheets
April 9	Danielle Henderson	April 30	Floyd Johnson

WEDDING ANNIVERSARIES

April 4	Jan & Erika Hanes
April 6	Chris & Kristen Sheets
April 8	Eric & Marva Solt
April 18	Greg & Leigh Caldwell



If you no longer wish to receive this newsletter please contact the church office at 982-4285 or splchurch@bellsouth.net. Thank You.

Non-Profit Org.
U.S. POSTAGE
PAID
Maryville, TN
Permit No. 128

*Sharing Christ's Love
With the World*

429 Sandy Springs Road
Maryville, TN 37803

Phone: 865-982-4285
Fax: 865-977-8070
E-mail: splchurch@bellsouth.net.
Web : <http://www.stpaulmaryville.org/>

The Rev. Kevin L. Strickland, Pastor

Church Office Hours : 9:00 am—2:30pm
Monday—Friday

«Mailing label»
«Address1»
«Address2»
«City» «State» «Zip code»



But the angel said to the women, "Do not be afraid; I know that you are looking for Jesus who was crucified. He is not here; for he has been raised, as he said. Come, see the place where he lay. Then go quickly and tell his disciples, 'He has been raised from the dead, and indeed he is going ahead of you to Galilee" Matthew 28: 5-7

Come and see for yourself - Easter Sunday, April 24th 8:00am & 10:30am

Dates of Interest

Discipleship:

Saturday, April 23rd ~ Holy Saturday Children's Activities/Egg Hunt ~ 10:00am

Parish Life:

Wednesday, April 6th & 13th ~ Lenten Salad Suppers ~ 5:30pm

Thursday, April 14th ~ SPAM Lutheran Church Tour ~ 9:00am

Saturday, April 16th ~ Chrismon Workshop ~ 10:00am

Sunday, April 24th ~ Easter Breakfast ~ 9:00am

Serving:

Sunday, April 17th - 24th ~ Family Promise

Worship:

Wednesday, April 6th & 13th ~ Mid-week Lenten Services ~ Noon & 6:30pm

Holy Week Services:

Monday, April 18th - Thursday, April 21st ~ 6:30pm

Good Friday, April 22nd ~ 7:00pm

Easter Vigil ~ Saturday, April 23 ~ 8:00pm